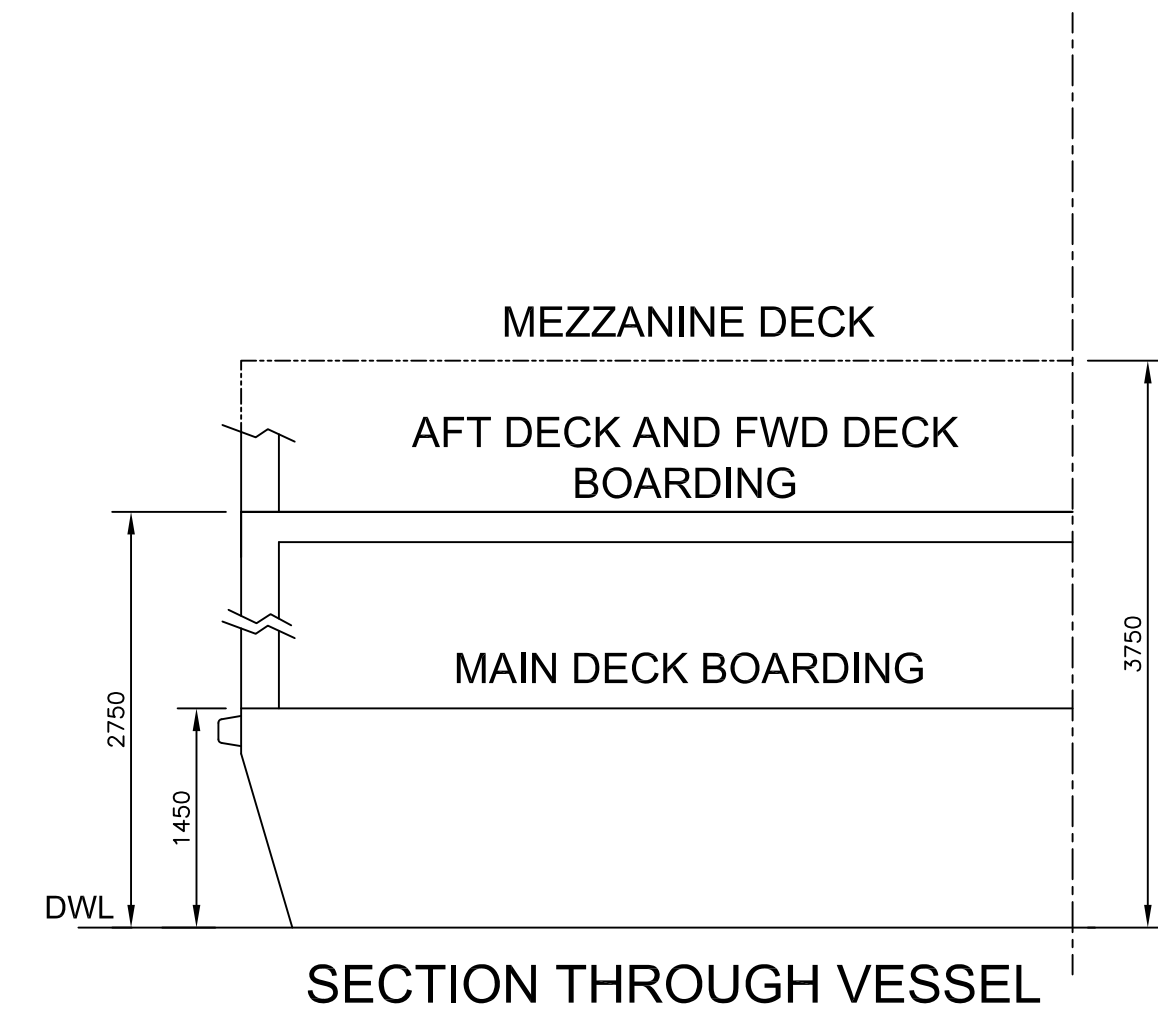
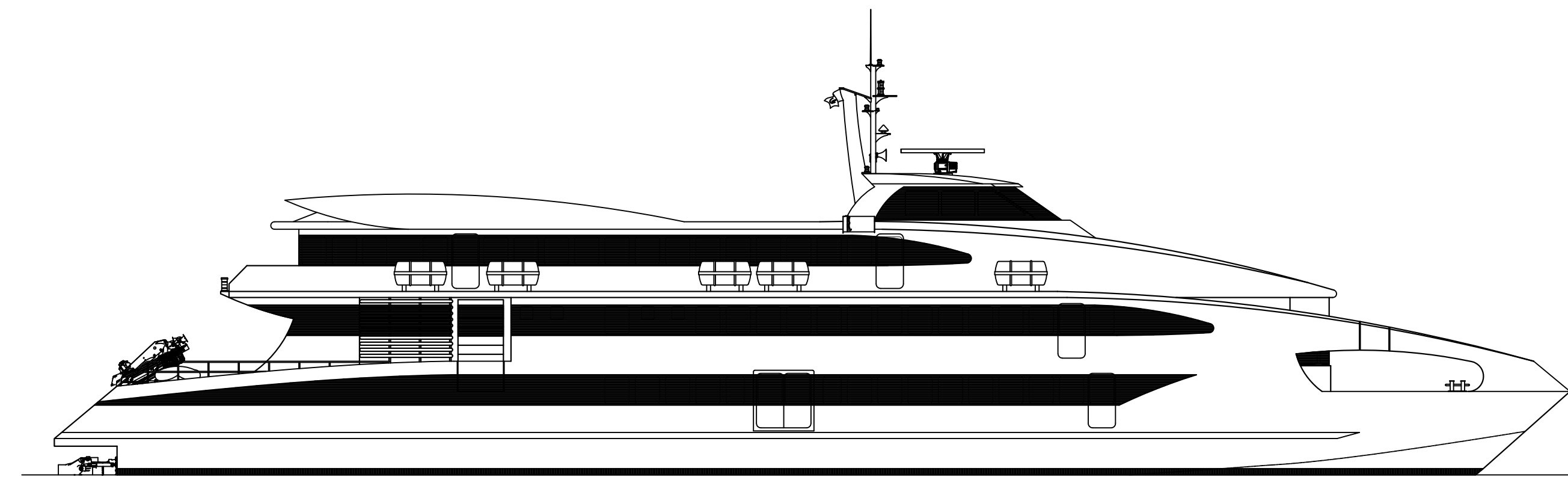
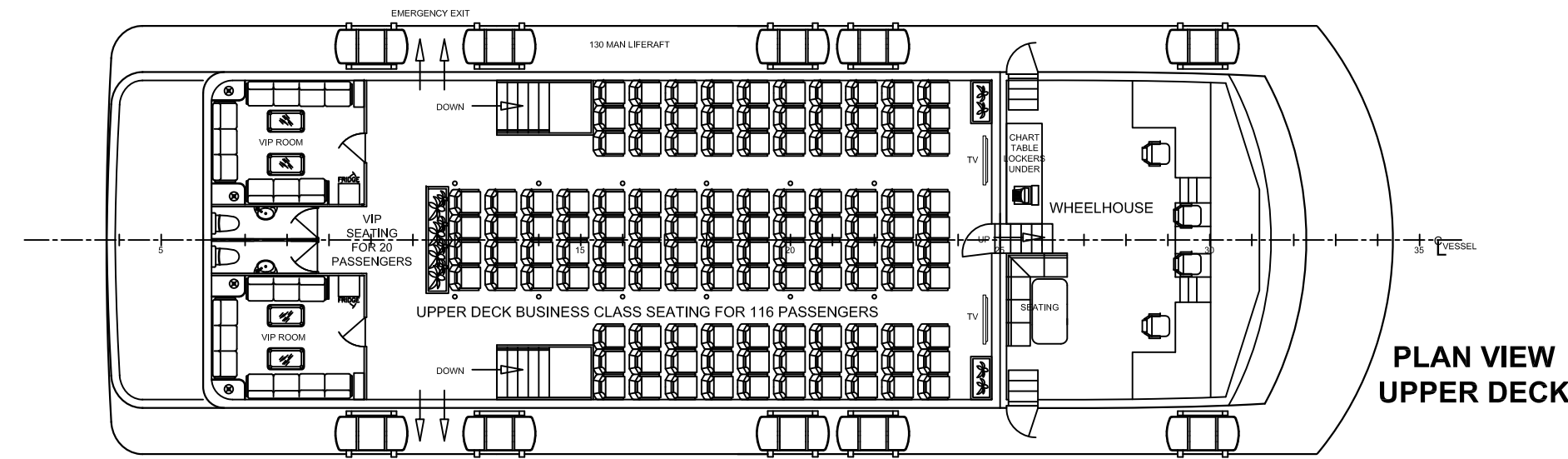


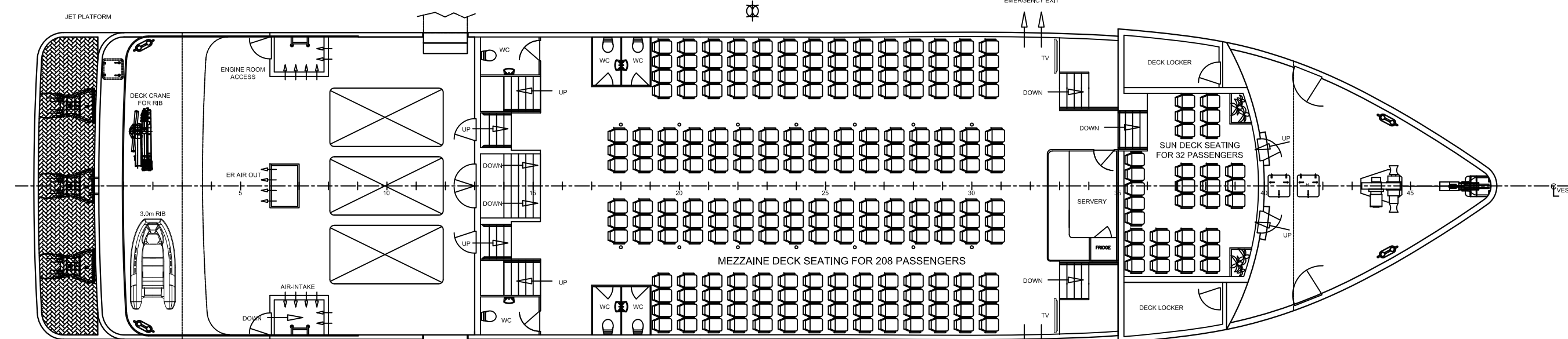
PROFILE VIEW



SECTION THROUGH VESSEL

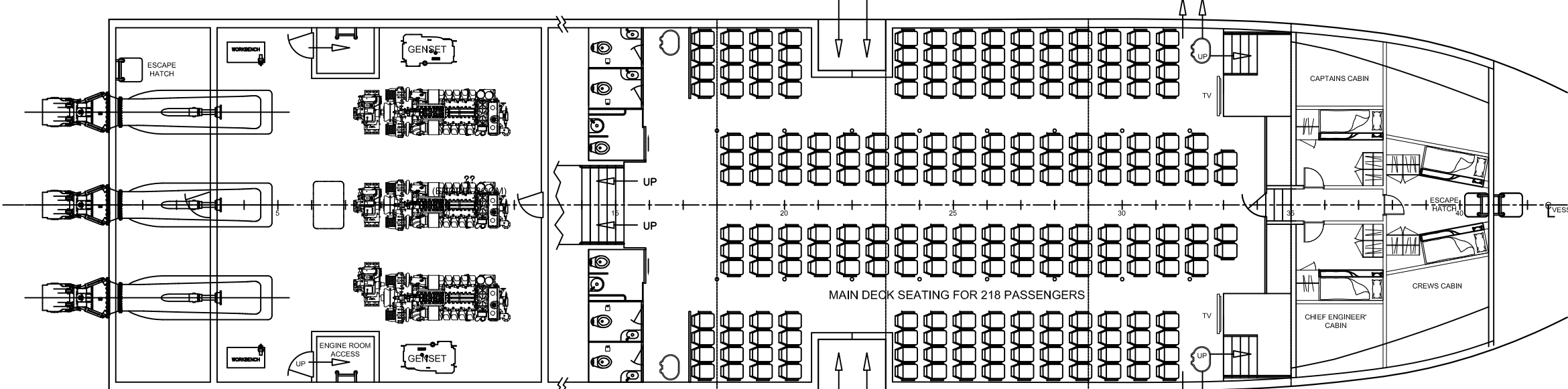


PLAN VIEW UPPER DECK



PLAN VIEW - MEZZANINE DECK

PLAN VIEW FWD SUN DECK



PLAN VIEW - ENGINE ROOM

PLAN VIEW - MAIN DECK

Ad Hoc
Marine Designs Ltd.
 Naval Architecture, Marine Design & Technical Support Services
www.adhocmarinedesigns.co.uk

45m Monohull Passenger Ferry

General Arrangement

PRINCIPAL DIMENSIONS	
LOA (hull)	47.95 metres
LWL	45.00 metres
Beam	11.00 metres
Draft	1.55 metres
Passengers	594

SCALE 1:150

MHFF 45-01-GA/02

PRIVATE AND CONFIDENTIAL © 2012
 THIS DRAWING ISSUED BY AD HOC MARINE DESIGNS LTD. FOR THE PURPOSE OF RECORD ONLY AND ON THE EXPRESS TERMS THAT IT IS TO BE TREATED AS PRIVATE AND CONFIDENTIAL AND IS NOT TO BE COPIED OR COMMUNICATED TO ANOTHER PERSON