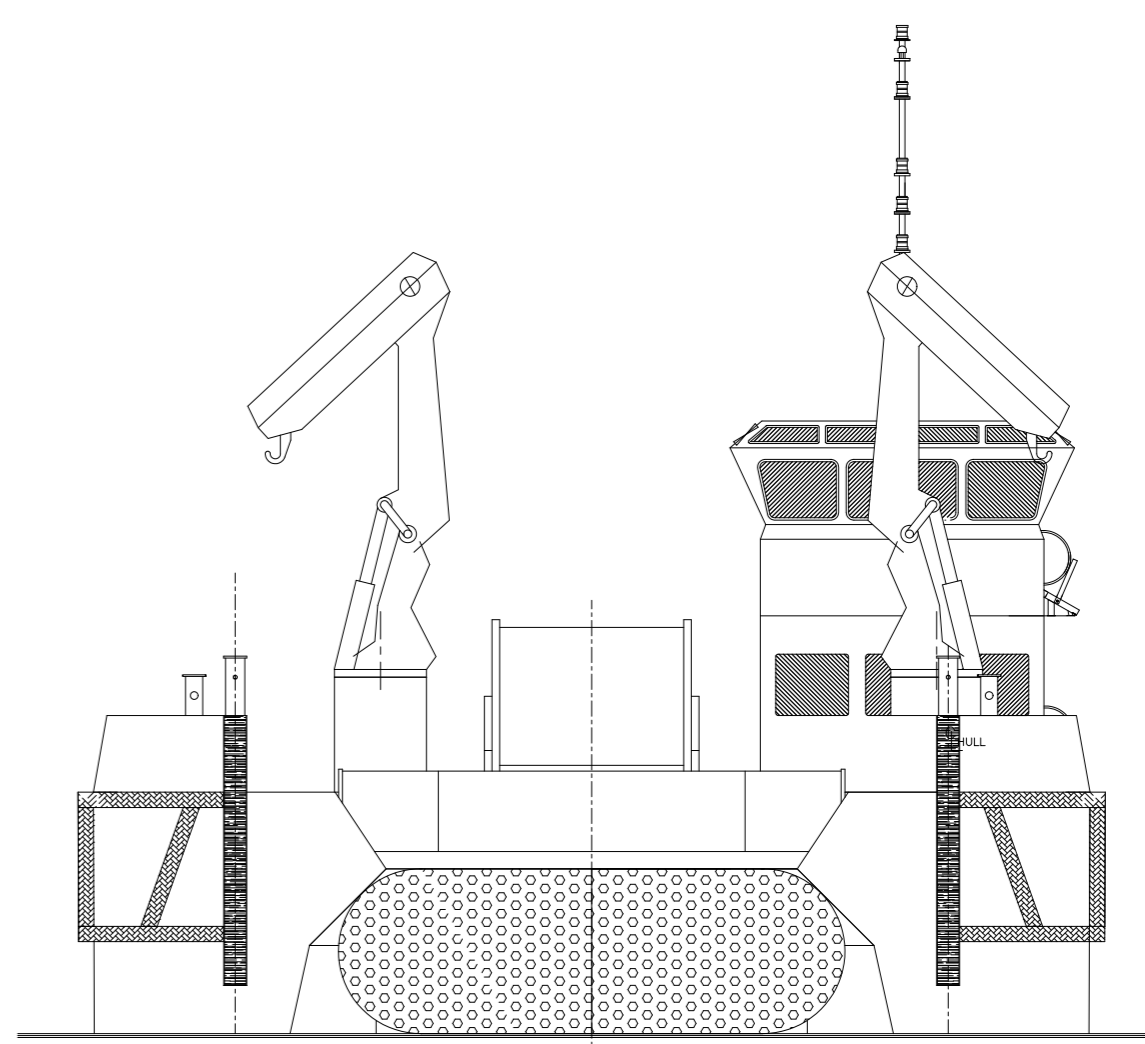
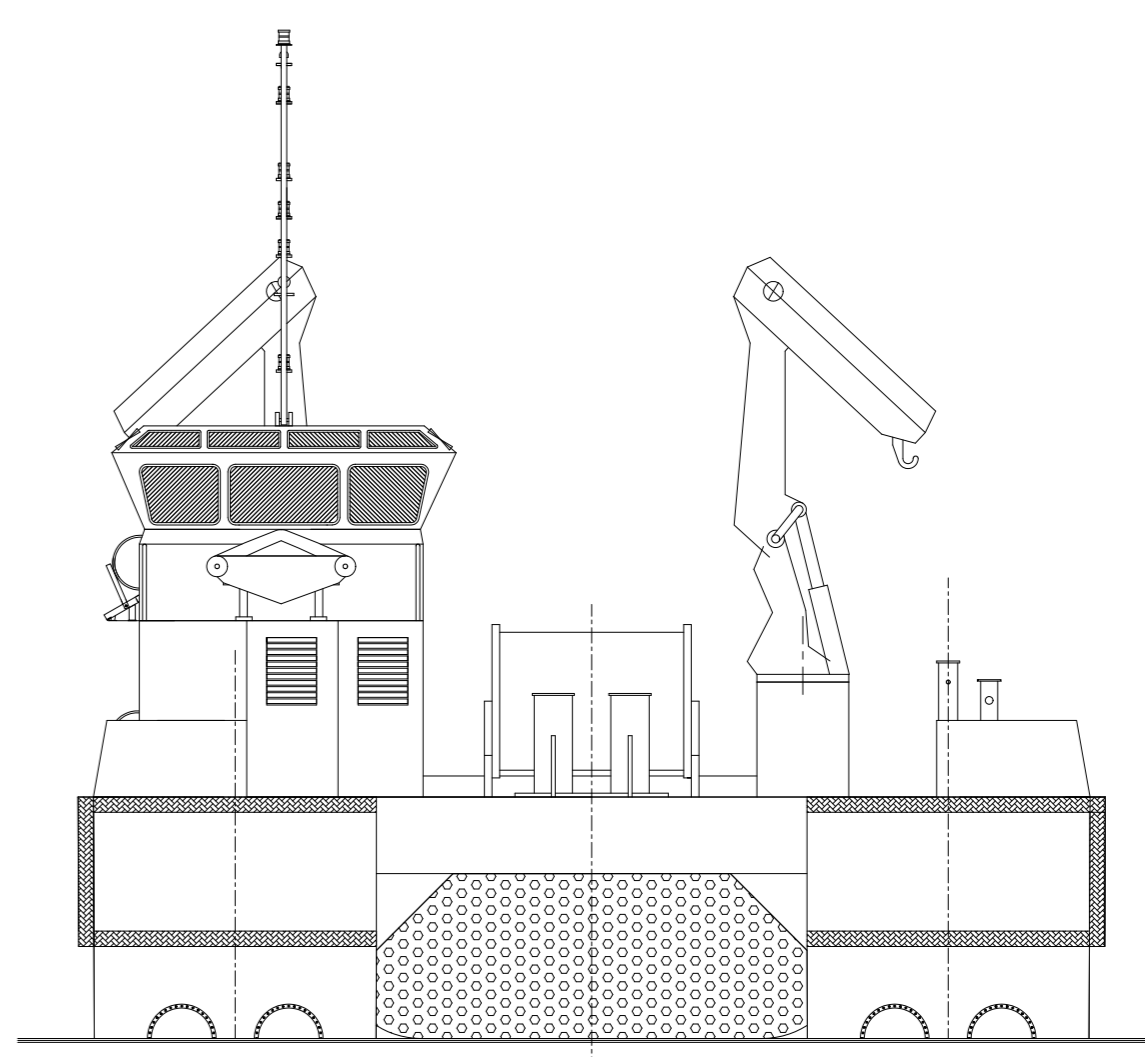


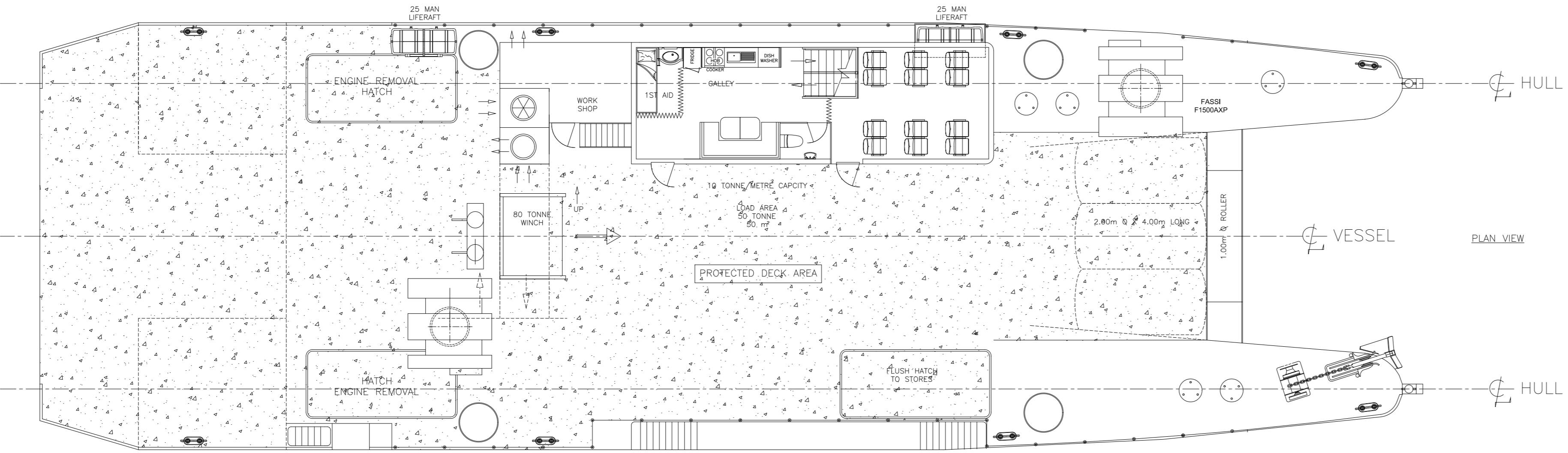
PROFILE VIEW



VIEW LOOKING AFT



VIEW LOOKING FWD



PLAN VIEW

PRINCIPAL DIMENSIONS:-		ADDITIONAL DATA:	
LENGTH OVERALL	42.09 METRES	4 X CAT C32	
LENGTH WATERLINE	38.00 METRES	4 X 900kW @ 2300 RPM	
BEAM MOULDED	13.00 METRES	4 X ROLLS ROYCE KaMeWa S71	
DATUM WATERLINE	1.85 METRES	2 X 75kW GENSETS	
DEPTH AT MIDSHIPS	5.00 METRES	SHIP FUEL 1 X 10 TONNE	
		CARGO FUEL 2 X 50 TONNE	
		MAX SPEED LIGHT XX KNOTS	
		WITH 50 TONNE CARGO XX KNOTS	
		WITH 150 TONNE CARGO XX KNOTS	
		BOLLARD PULL 23 TONNE CONTINUOUS	

ISSUE	DATE	MODIFICATION
7	14-3-09	AFT CRANE MOVED TO STBD SIDE FWD/AFT VIEWS ADDED
6	3-2-09	HULL TO HULL CENTRELINE UPDATED TO 9300mm
5		UPDATE TO SUIT TCG
4	26-11-09	UPDATE FROM CLIENTS FAX 13-1-09
3	18-1-09	ADDITIONAL CRANE AFT
2	20-12-08	GENERAL UPDATE FROM CLIENT
1	9-12-08	ISSUED TO CLIENT
	25-11-08	

ISSUE	DATE	MODIFICATION

3RD ANGLE PROJECTION  
DO NOT SCALE, IF IN DOUBT ASK

SCALE	1:100
OR AS STATED	
DRAWN	JPK

TOLERANCES:

0 - 5mm	± 0.25mm
6 - 25mm	± 0.5mm
26 - 1000mm	± 1mm
1001MM & ABOVE:	± 3mm
ANGULAR:	± 2"

UNLESS OTHERWISE STATED  
DIMS IN MM UNLESS OTHERWISE STATED

PRIVATE AND CONFIDENTIAL  
© 2009  
THIS DRAWING ISSUED BY AD HOC MARINE DESIGNS LTD. FOR THE PURPOSE OF RECORD ONLY AND ON THE EXPRESS TERMS THAT IT IS TO BE TREATED AS PRIVATE AND CONFIDENTIAL AND IS NOT TO BE COPIED OR COMMUNICATED TO ANOTHER PERSON



TITLE	FASTMULTICAT SPEED & STABILITY
DRG No.	FMC-38-GA-07